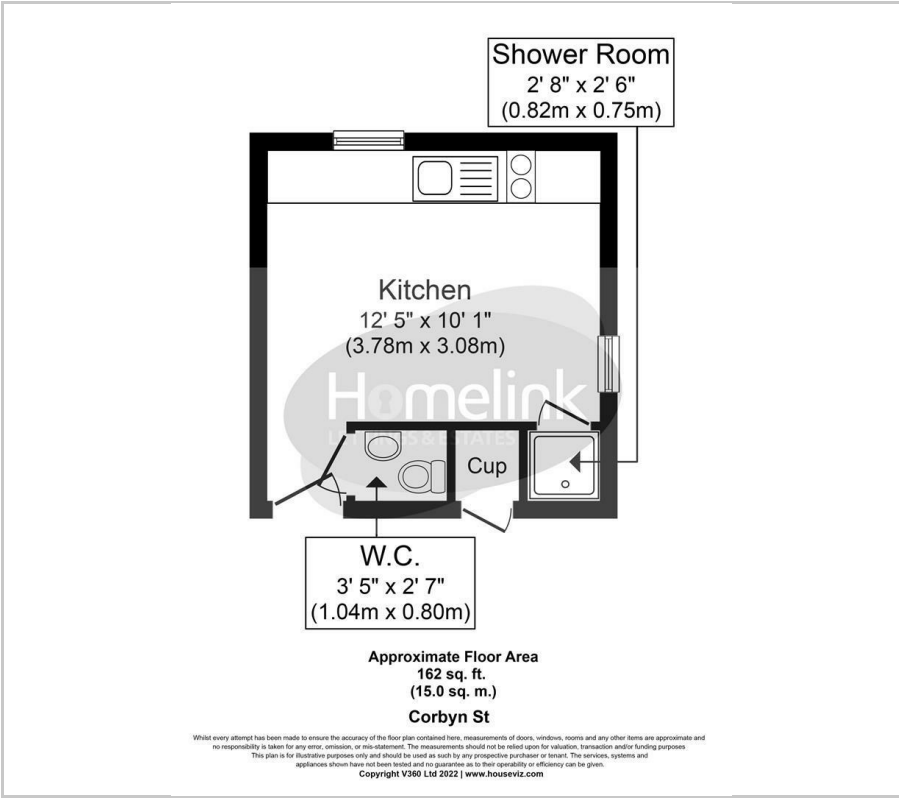




Corbyn Street, Finsbury Park N4

£1,050 Per Month

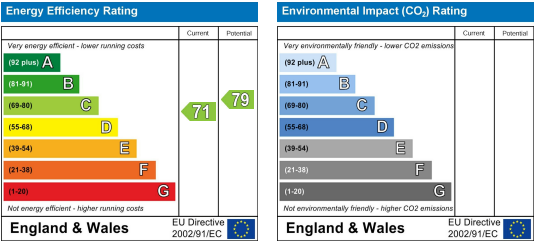
Floor Plan



Area Map



Energy Efficiency Graph



Viewing

Please contact our Homelink Lettings & Estates Office on 0208 882 2112 if you wish to arrange a viewing appointment for this property or require further information.

- Studio Flat
- Fully fitted kitchen
- Separate toilet
- Close to transport
- Available from the 7th January 2026
- First Floor
- Shower room
- Unfurnished
- Close to bus routes
- Must see!

**\*\* STUDIO FLAT\*\*** Homelink Lettings & Estates are delighted to offer rent this self contained first floor Studio flat in the heart of the Finsbury Park district. The property offer great benefits such as fully fitted kitchen, shower room, gas central heating laminate flooring and is available now.

Great location as the property is located close to Crouch Hill over ground station and close to Finsbury park underground station. ideal for single professional commuting in the London's town centre. Bus routes also available also towards Islington, Wood Green and Hampstead heath.

Please call Homelink Lettings & Estates today on 0208 882 2112 today and speak to one of our friendly lettings team today. Early viewings recommended.

Islington C/Tax Band 'A'  
2025/26 C/Tax = £1,341.21



These particulars, whilst believed to be accurate are set out as a general outline only for guidance and do not constitute any part of an offer or contract. Intending purchasers should not rely on them as statements of representation of fact, but must satisfy themselves by inspection or otherwise as to their accuracy. No person in this firms employment has the authority to make or give any representation or warranty in respect of the property.

Homelink Lettings and Estates  
62 Chase Side, London N14 5PA  
0208 882 2112 [homelink.co.uk](http://homelink.co.uk)

